



Architectural Photography

by William Horton



Custom Homes

Photographing a newly-built custom home, before it is occupied, is a special opportunity. As photographers, we are better able to focus on the unique design elements and quality craftsmanship that reflect the talents of the architect and builder.

This photograph highlights one of the unique design features of this home, an elliptical staircase as seen from the below-grade entertainment area looking up to the second floor. What we tried to capture was an abstract pattern, a visual symbol for this elegant home.

Architect: Wilder Architecture & Planning, Lafayette, Colorado
Builder: Van Matre Construction, Lafayette, Colorado



KITCHEN AND EATING AREA

This view of the kitchen and breakfast area focuses attention on signature design elements throughout the home, such as richly-hued wood, marble, and cabinetry details like the corbels pictured on the next page.





MASTER BATHROOM

The photograph to the right and the detail above demonstrate how we can bring beautiful outdoor views into an interior scene.





GREAT ROOM

The main features of the great room are captured in these two photographs: the two-story fireplace, the mahogany floors, and the floor-to-ceiling windows offering expansive views to the mountains beyond.

Photographs that include exterior and interior views require balancing the intensity and color of light.



PORTICO

To promote a welcoming and friendly atmosphere, we took this photograph of the entry portico at dawn. We used interior lights to create warmth and the rosy sunrise to gently illuminate the exterior.

Remodeled Homes



Remodeling a home updates surroundings and captures unused space. When we photograph such projects, we try to show how the newly enhanced space is being used, not just document the technical improvements.

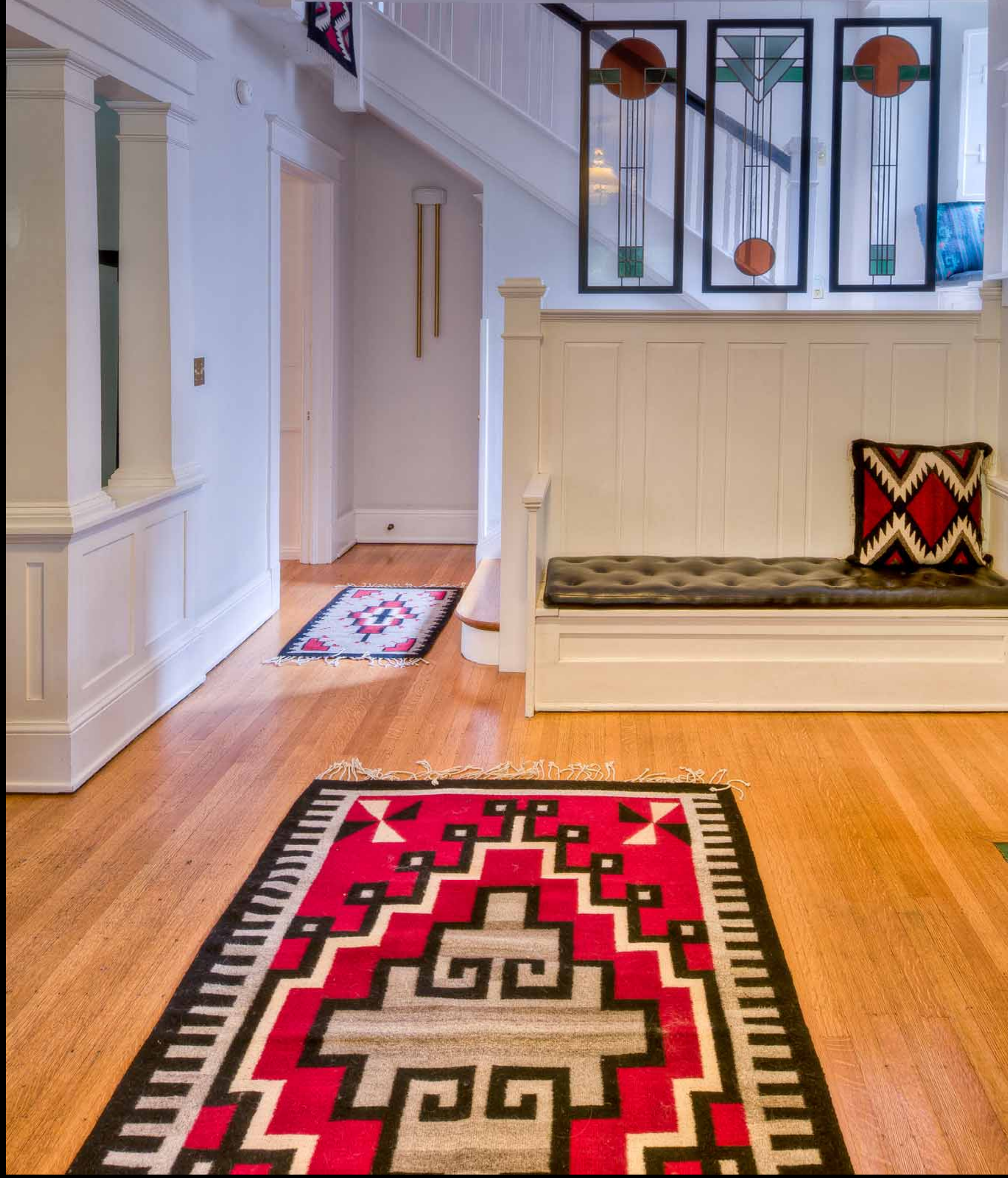
For instance, here is a third-floor reading nook created when the low ceiling was removed from the original dormer. The photograph emphasizes not only the coziness and utility of the nook, but also the geometry resulting from the alteration.

Designers: William & Katherine Horton, Boulder, Colorado
Builder: Parrish Construction Company, Boulder, Colorado



FOYER AND DINING ROOM

These views of the foyer [right] and dining room [above] capture the strong linearity, openness, and quality of light found throughout the home.





KITCHEN

Textures and patterns make each project unique. These photographs highlight the custom-designed cabinetry made from cherry and butternut burl, the green granite countertops, the curved cabinets, and the slate and granite floor tiles.





SIDEBOARD

The photograph to the right captures the strong lines and details of this remodeled sideboard. It also features the consistent design elements found elsewhere, such as the ebony handles, the fretwork on the doors, and the use of granite.

Above: The interplay of light and shadow highlights the refurbished millwork.





PROJECT AND RECORDS ROOM

By using strong diagonal lines to lead the eye, this photograph communicates the useful space reclaimed when an old airing porch was transformed into a project area and records room.



SECOND BATHROOM

Photographing small spaces, such as this bathroom, is challenging. We often use reflections to "tell the story," as shown in the photograph above.

Illustrating concepts, such as the efficient use of space, requires choosing telling details like the corner shower.



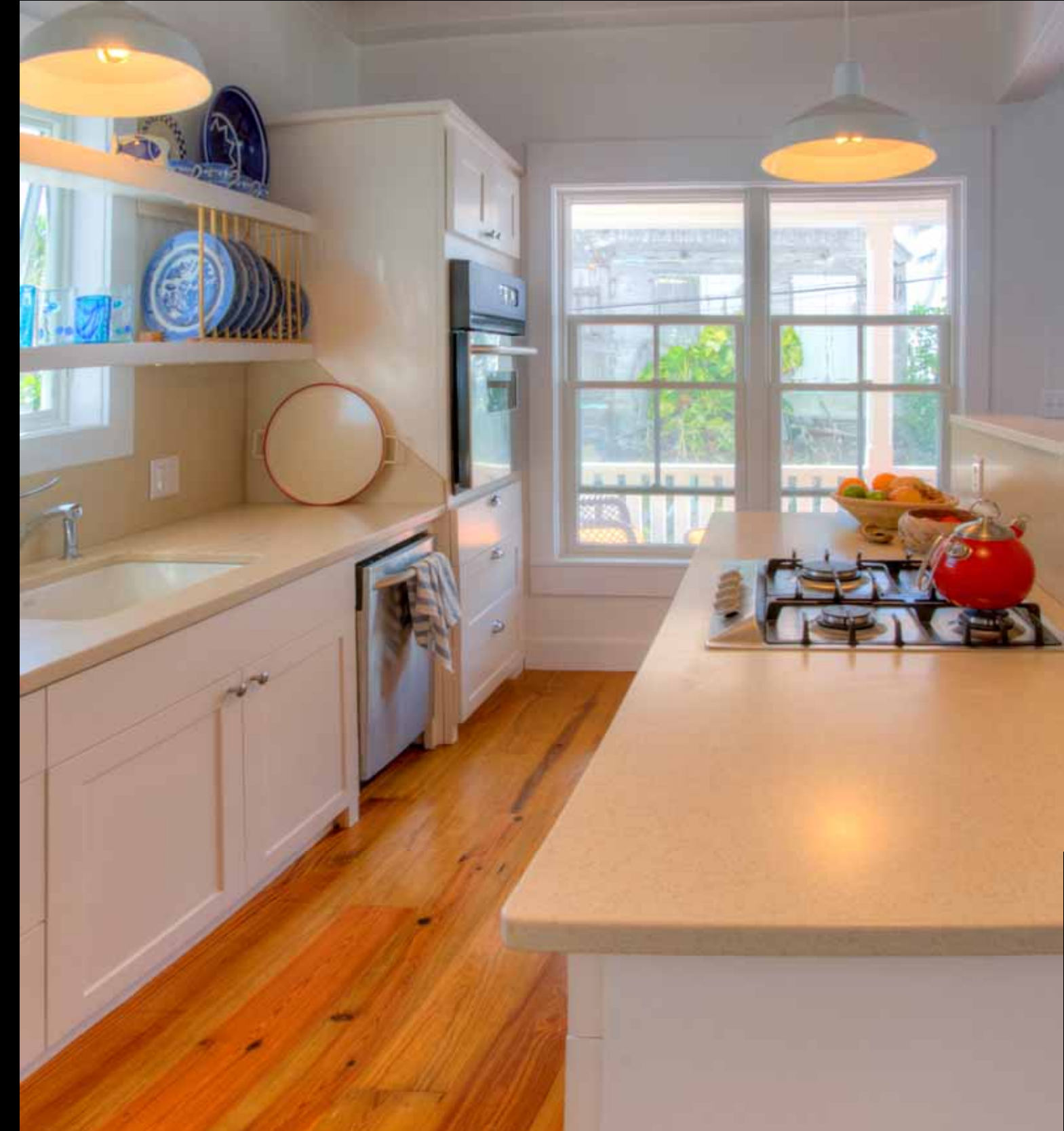
Vacation Homes

Vacation homes are places where people go to have fun and relax. Our job as photographers is to communicate that sense of freedom and joy.

Here is the front of a Bahamian vacation cottage. We captured this photograph at dawn to take advantage of the soft light. Then, we simplified the photo and applied watercolor effects to create a work of art for the cottage's owner.

Not only do we take stunning photographs, we also specialize in post-production editing and publishing.

Architecture and interior design: Sybil Gillett Smith
Construction: Maxwell McIntosh, 3T's Construction



GALLEY KITCHEN

This galley kitchen of the Bahamian cottage is small, but very efficient—like a galley on a boat.

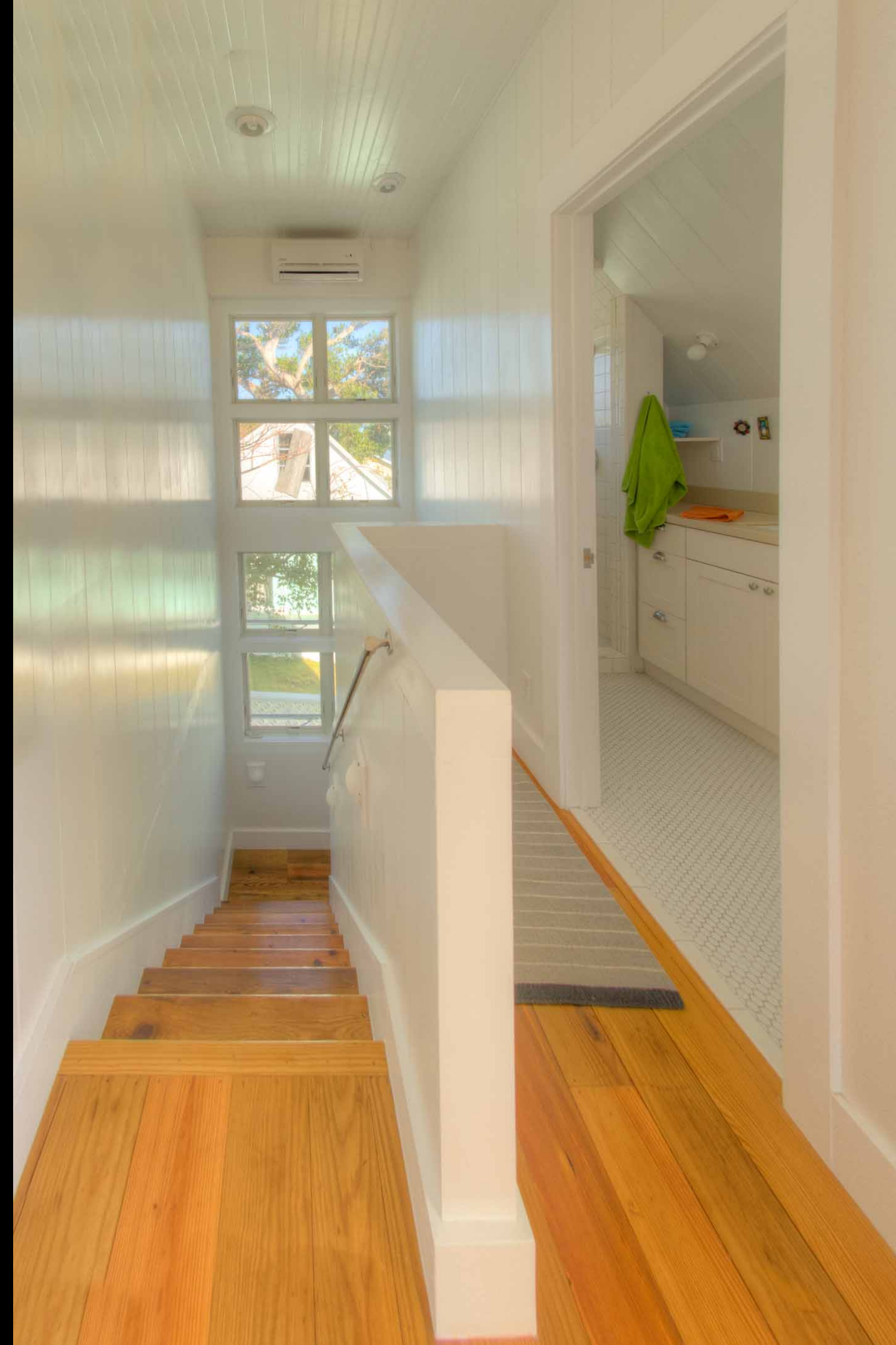
These photographs capture the simple and clean approach by featuring the natural wood-plank floors, crisp white woodwork, and abundant light.

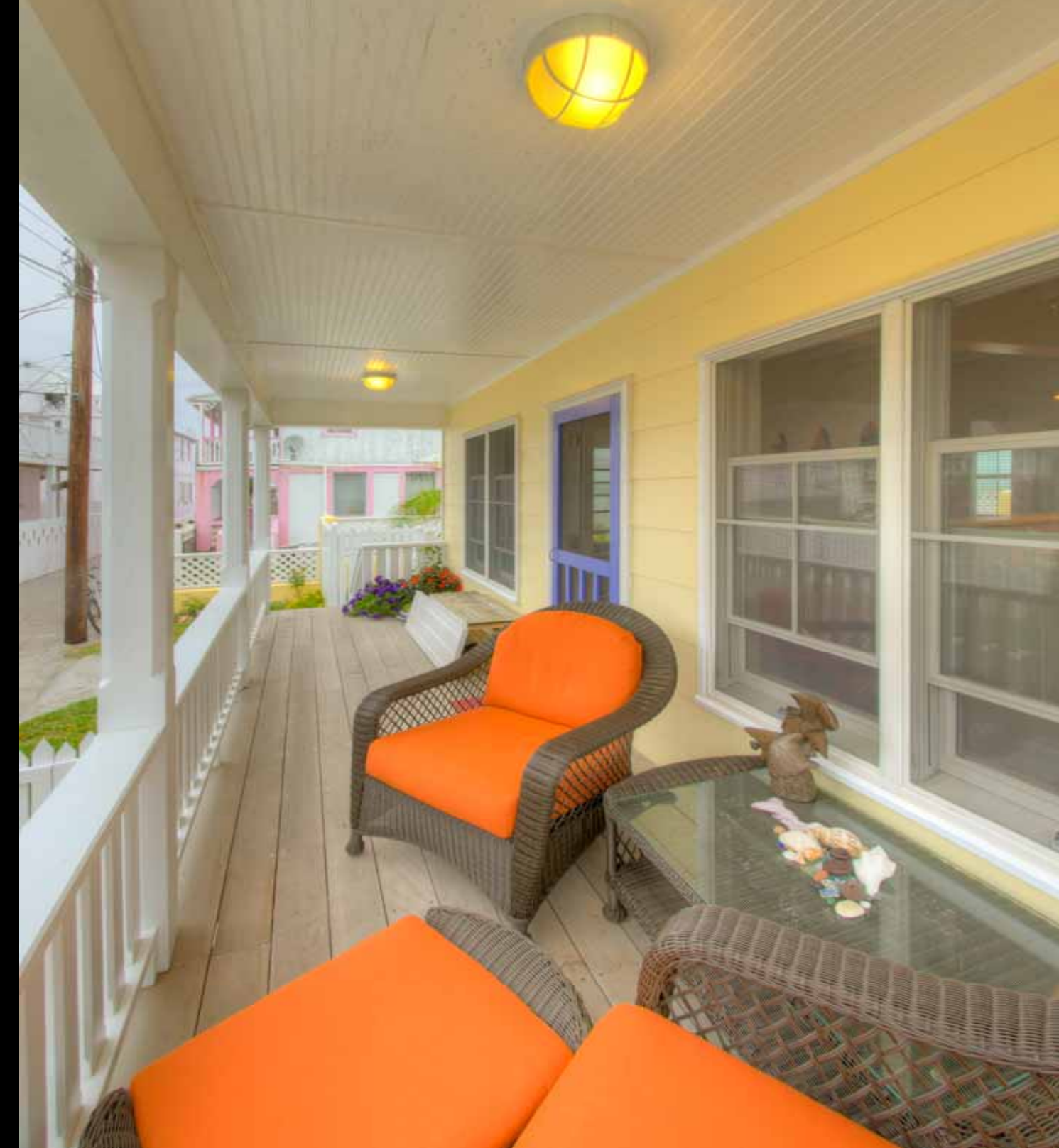


LIVING ROOM

This view of the living room captures the lightness, airiness, and whimsy found throughout the cottage.

On the following page are views of the downstairs and upstairs bathrooms.





OUTDOOR LIVING

The Bahamas are known for sunshine, gentle breezes, and comfortable temperatures. And the inhabitants embrace the outdoor lifestyle.

Part of our assignment was to illustrate how the architect found ways to bring the outside in—to integrate the environment into the design of the cottage.

So, we photographed elements, such as the second-floor airing deck, the long front porch open to the street, and the back porch that uses plantation shutters to provide privacy and protection from the elements.

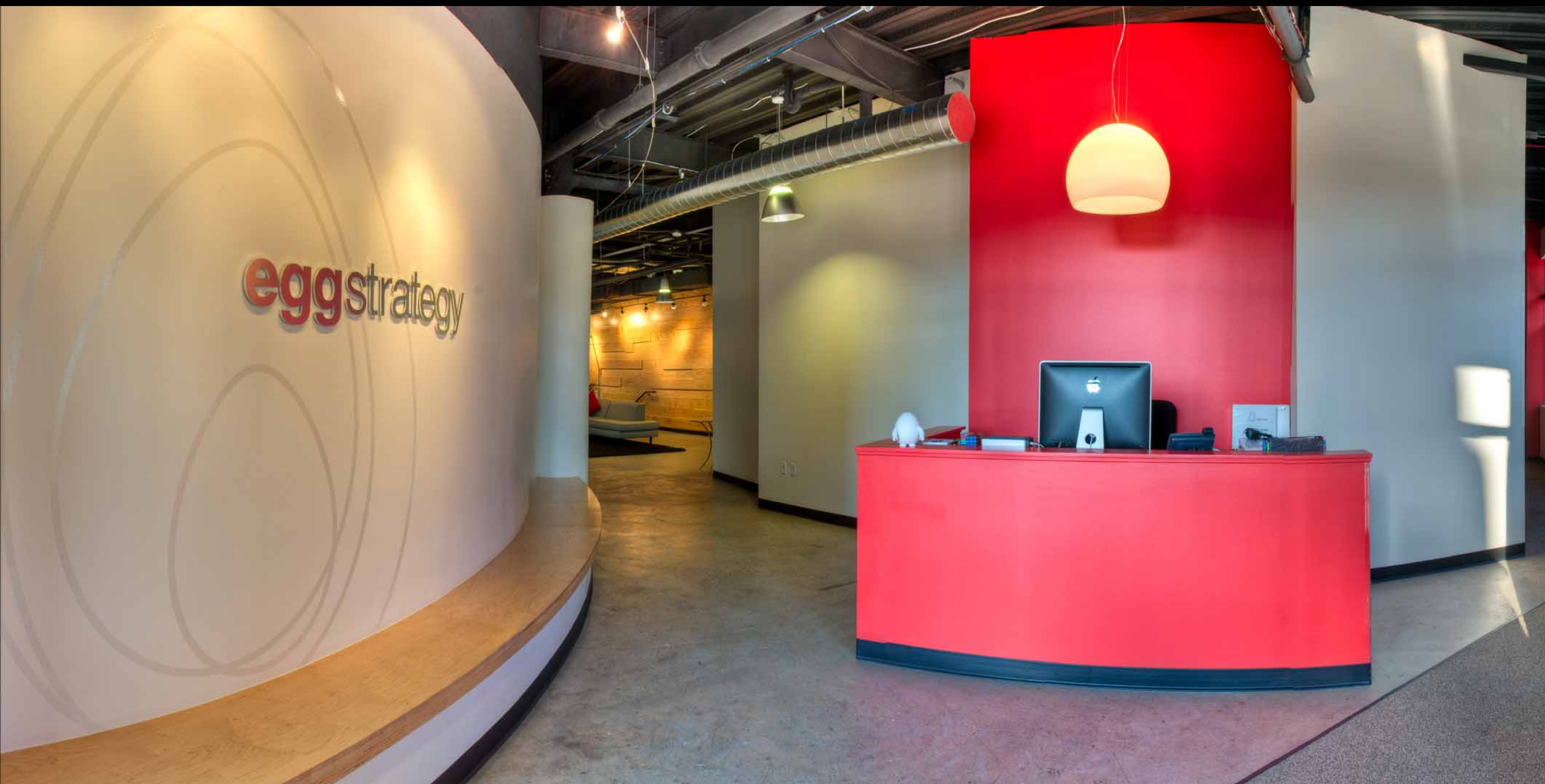


Commercial Properties

Commercial spaces require form and function. When we photograph a commercial project, we strive to create visuals that reveal both aesthetics and utility.

This detail shot distills the design approach into one simple photograph, the use of exposed mechanicals, bright colors, and industrial lighting.

Builder: Van Matre Construction, Lafayette, Colorado



BUSINESS LOBBY

This photograph of the vestibule captures the use of curves, natural materials, and color—design elements used throughout this office.



RECEPTION AREA

The above photo highlights the openness of the layout, while at the same time featuring the simple techniques used to create functional work and entertainment areas, such as the grass planter and wood divider pictured to the right.





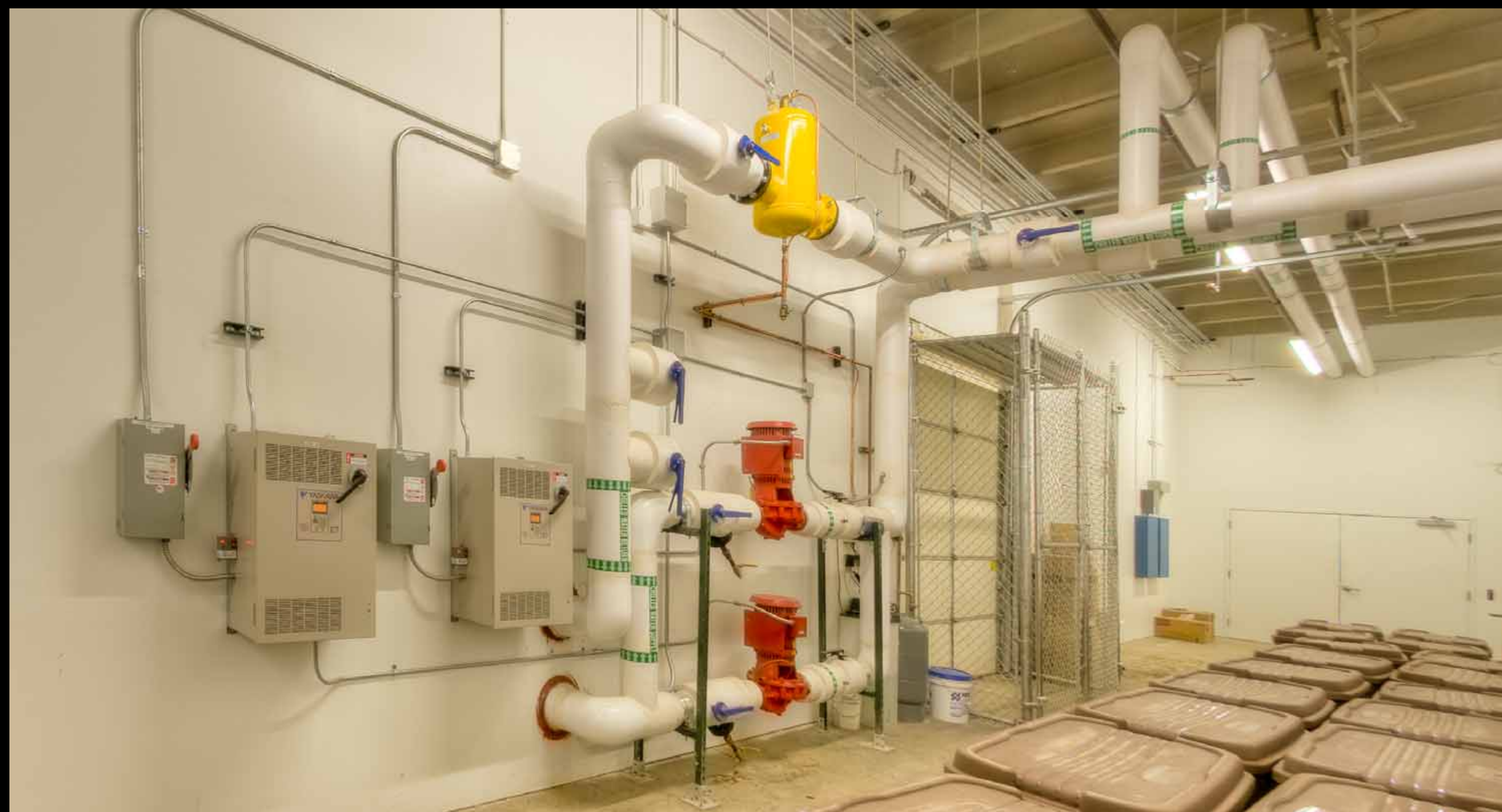
EXTERIOR VIEW

Photographing a retail business can be challenging, especially when it is surrounded by a parking lot. So, we took this photograph at dawn to avoid the traffic and take advantage of the warm soft light. This approach allowed us to capture not only the exterior, but also some interior details, too.



MECHANICALS

There is beauty to be found in the rhythm of plumbing pipes and the preciseness of electrical boxes. We enjoy opportunities to capture those elements that the public seldom see. They are the hallmarks of quality construction.





OFFICE IN HISTORIC RESIDENTIAL BUILDING

In the historic downtown of Lafayette, Colorado, is a renovated residence that is now being used as the business office for a construction company, an architect, and an artist. Our assignment was to showcase how the renovation integrated historic features of the home with the needs of a modern business.

We scheduled the photo shoot for late spring, so that the surrounding vegetation would nicely frame the exterior shots and we could take advantage of the warmer light shining through the windows and front door. The viewpoint we took for this exterior shot eliminates most of the visual noise caused by neighboring structures. And, the shot of the reception area leads the eye into the interior and showcases some of the vintage details, such as the tin ceiling, pendant lights, and transom window above the doorway.

Architect: Wilder Architecture & Planning, Lafayette, Colorado

Builder: Van Matre Construction, Lafayette, Colorado



MORE DETAILS

These details—the classic moldings, the hard wood floors, the bank clock, sliding doors, and textured plaster walls—when taken together, capture the vintage feel of the entire building.





Historic Structures

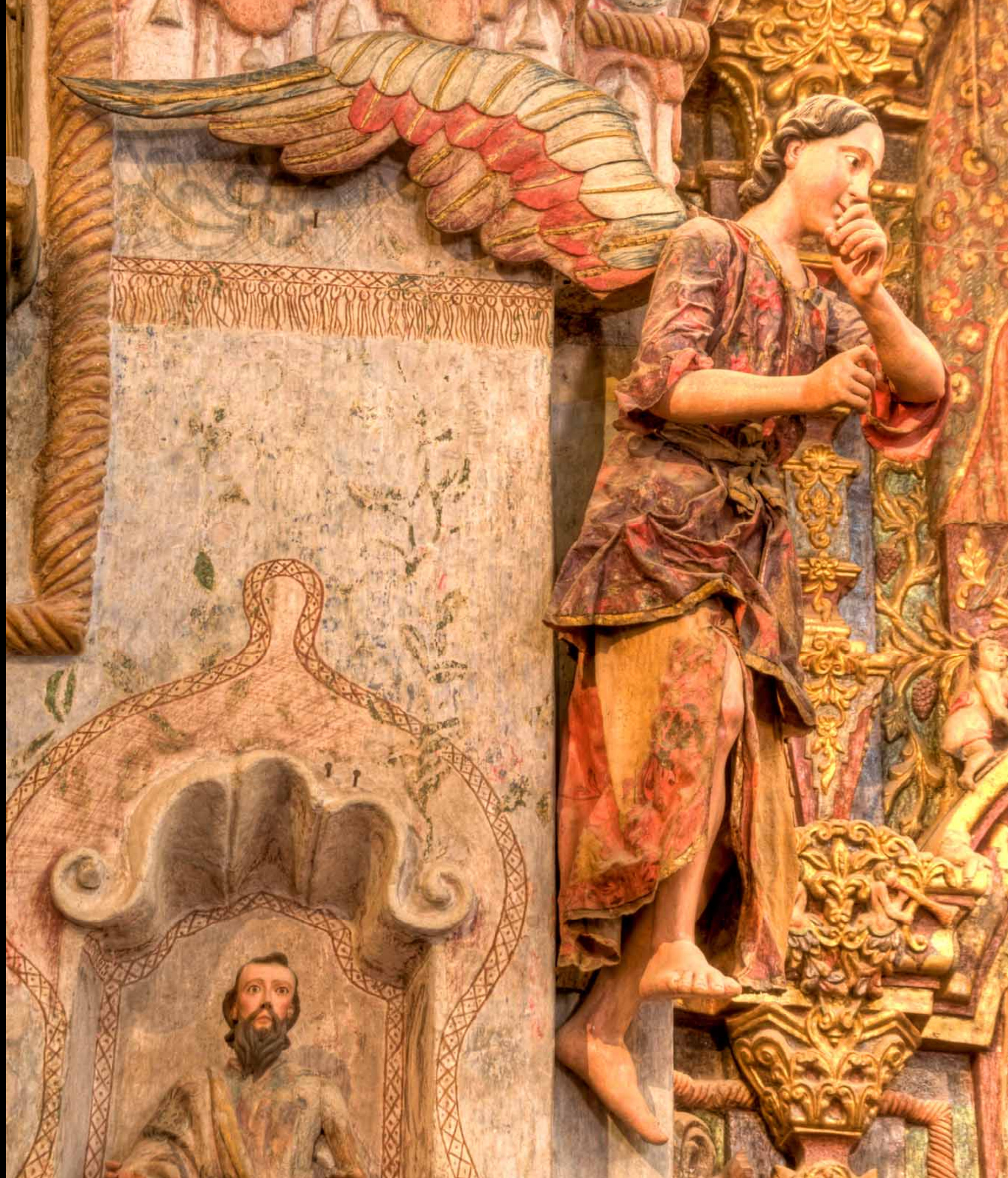
Photographing historic structures in a new way is a challenge. Here is a unique view of the San Miguel Mission in Socorro, New Mexico. We were especially drawn to the textures of the rounded adobe walls and tapering towers.



SAN XAVIER DEL BAC, south of Tucson

The photograph above strives to capture the feeling one has upon entering the vestibule of the mission. We used a fish-eye lens to capture this detail in "one glance" —the decorative painting on the ceiling, the trompe-l'oeil along the walls, and the rhythm of the scalloped pew backs leading the eye to the main altar.

This close-up of an angel overlooking the altar exemplifies the attention to realism found throughout. Notice the facial expression, hand gestures, and the drape of the fabric.





Above: The Roosevelt Lake Bridge is the longest two-lane, single-span, steel-arch bridge in North America. To capture all of that, we shot a panorama at sunset and included the beautiful reflection in the frame.

Right: The Gadsden Hotel in Douglas, Arizona, is known for its opulent interior that features Tiffany windows, a marble staircase, and a coffered ceiling adorned with gold leaf.

This detail photograph captures this grandeur and depicts the three-dimensional nature of the column and the strong diagonal lines formed by the main support beams.





Contact us to discuss your needs, view our portfolio, and obtain a quote. We would love to work with you on your next project.

William Horton Photography

838 Spruce Street

Boulder, CO 80302

+1 303.545.6964

william@horton.com

architecture.horton.com

